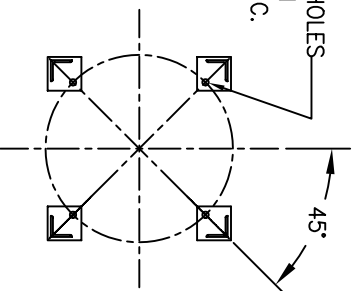


(4) 3/4" \varnothing [19 \varnothing] BOLT HOLES
LOCATED AS SHOWN
ON 22.13 \varnothing [562 \varnothing] B.C.

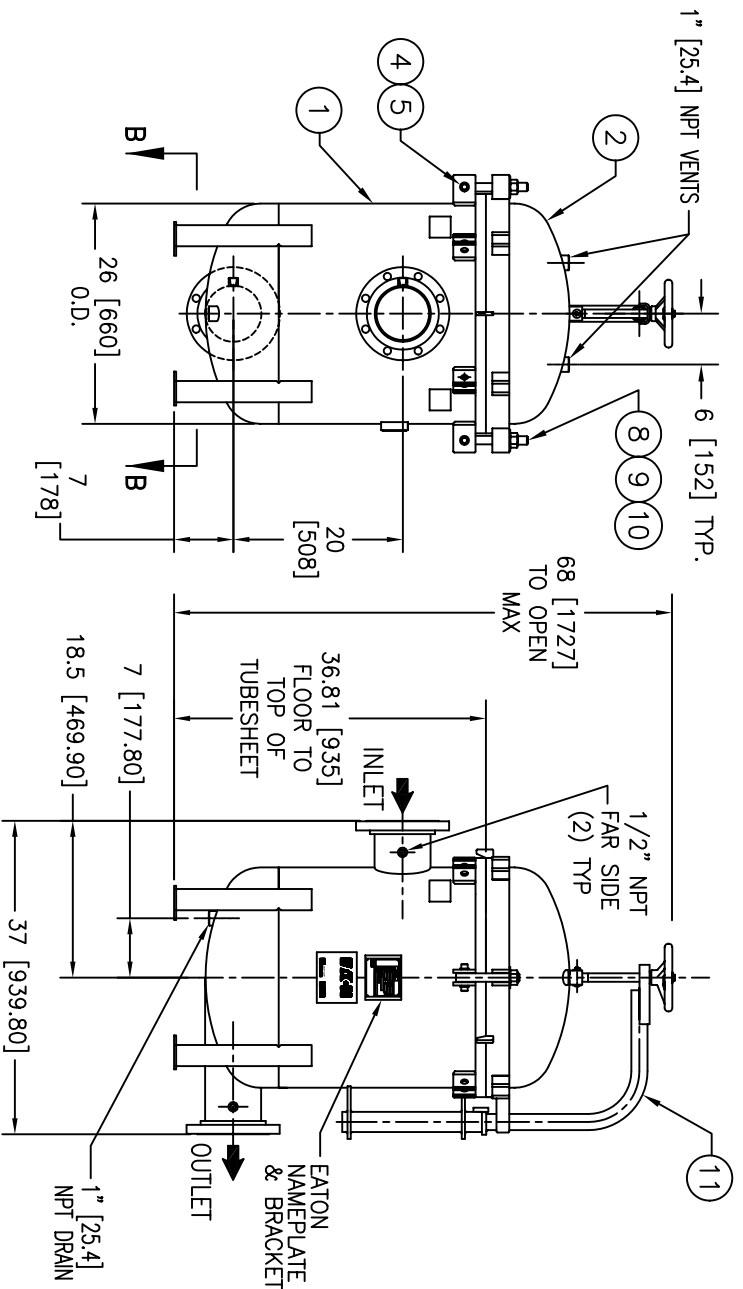


SECTION B-B

ITEM	PART NAME	MATERIAL
1	BODY	SA240 304/304L
2	COVER	SA240 304/304L
3	O-RING	BUNA-N
4	PIN	SA193 B7 ZINC PL
5	SNAP RING	STEEL ZINC PL
6	BASKET RESTRAINER	304 SS
7	FILTER BAG RETAINER	316 SS
8	EYE BOLT	SA193 B7 ZINC PL
9	HEX NUT	SA194 2H ZINC PL
10	WASHER	STEEL ZINC PL
11	DAVIT ASSEMBLY	CARBON STEEL

NOTES:

1. UNITS ARE TO BE DESIGNED, FABRICATED & "U" STAMPED IN ACCORDANCE WITH ASME SECT. VIII, DIV. 1 BOILER & PRESSURE VESSEL CODE, IN COMPLIANCE TO LATEST ADDENDA.
2. INLET / OUTLET FLANGE CONNECTIONS PER ANSI B 16.5.
3. DESIGN PRESSURE: 150 PSI (MAWP)
DESIGN TEMPERATURE 250° F.
MDMT - -20° F @ 150 PSI.
4. ALL DIMENSIONS ARE IN INCHES / (MM).
5. ALL BOLT HOLES ARE TO STRADDLE NATURAL CENTERLINES.
6. APPROX. WEIGHT (DRY) 810 LB. (367 KG.)
7. APPROX. SHIPPING WEIGHT 935 LB. (424 KG.)
8. ALL CARBON STEEL PAINTED PER ES-301.



CERTIFIED FOR:
P.O. NO.:
SALES ORDER NO.:
QUOTE NO.:
TAG NO.:
VESSEL CODE: MBF-0602-BB10-060A-UT-11HD
PART NUMBER: F3AV0600003-304

EATON FILTRATION, LLC
900 FARMOUNT AVENUE, ELIZABETH, NEW JERSEY 07207

NAME: MAXILINE MBF0602HD FILTER VESSEL
6" 150# RF INLET/TANGENTIAL OUTLET
STAINLESS STEEL-304

DRAWN	FJM	DATE	12/13/06	CERT.	LH	DATE	12/13/06
SIZE	DWG	HD0606TS-304		REV	B		

UNAUTHORIZED USE, MANUFACTURE OR REPRODUCTION IN WHOLE OR IN PART IS PROHIBITED. DRAWING, DESIGN AND OTHER DISCLOSURES PROPERTY OF EATON FILTRATION, LLC

ELECTRONIC FILE NAME: HD0606TS-304.DWG
REF. ECR E753 DATE 08/02/07