



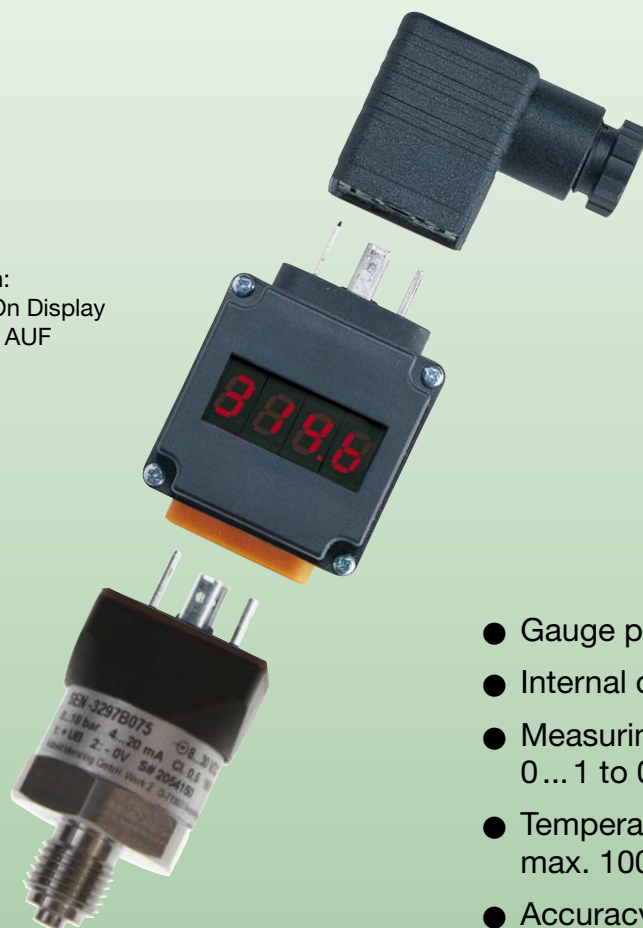
OEM - Pressure sensor for universal application Piezoresistive/Thin film



measuring
•
monitoring
•
analysing

SEN-3297

Option:
Plug-On Display
Model AUF



- Gauge pressure
- Internal diaphragm
- Measuring range:
0 ... 1 to 0 ... 600 bar
- Temperature (medium):
max. 100 °C
- Accuracy class: 1.0
- Material: stainless steel
- Connection: G ¼, G ½,
¼ NPT, ½ NPT



KOBOLD companies worldwide:

ARGENTINA, AUSTRIA, BELGIUM, BULGARIA, CANADA, CHILE, CHINA, COLUMBIA, CZECHIA, DOMINICAN REPUBLIC, EGYPT, FRANCE, GERMANY, GREAT BRITAIN, HUNGARY, INDIA, INDONESIA, ITALY, MALAYSIA, MEXICO, NETHERLANDS, PERU, POLAND, ROMANIA, SINGAPORE, SOUTH KOREA, SPAIN, SWITZERLAND, TAIWAN, THAILAND, TUNISIA, TURKEY, USA, VIETNAM

KOBOLD Messring GmbH
Nordring 22-24
D-65719 Hofheim/Ts.
Head Office:
+49(0)6192 299-0
+49(0)6192 23398
info.de@kobold.com
www.kobold.com



Description

Robustness and long-term stability during operation are the strengths of this compact pressure sensor for general industrial applications. The technical specifications and attractive price level of these sensors make them ideal for OEM applications.

The materials and technologies used make these sensors suitable for applications with aggressive media. Welded connections between pressure cell and process connection require no sealing elements and make the measuring system particularly resistant to mechanical shock and vibration. The compact design makes these sensors interesting for room critical applications.

A wide variety of electrical connections and pressure ports simplifies the adaptation to different applications. The pressure sensor is internationally certified and ready for global deployment.

The pressure sensors comply with electromagnetic compatibility requirements (EMC) as per EN 61326 .

Applications

- Engine construction
- Pumps
- Process engineering
- Plant construction
- Hydraulics
- Pneumatics
- Compressors
- Building technology

Technical data

Measuring range: 0...1 bar ... 0...600 bar
 Technology: internal diaphragm
 Pressure type: gauge pressure
 Housing: stainless steel 1.4301, PA
 Connection: G ¼ acc. to EN 837 (standard)
 G ¼ acc. to DIN 3852-E
 G ½ acc. to EN 837
 ¼ NPT, ½ NPT, others on request

Wetted parts: stainless steel 316L uand 1.4534
 Sensor element: ≤ 6 bar piezoresistive
 ≥ 10 bar thin film
 Temperature range: Storage: -30...+100 °C
 Medium: -30...+100 °C
 Compensated range: 0... 80 °C
 Ambient: -30...+100 °C
 Overrange limit: 2 x nominal pressure
 Accuracy class: 1 % (option 0,5 %)
 Repeatability: ≤ ± 0.16 % of span
 Stability per year: ≤ ± 0.2 % of span
 Electrical protection: Polarity, overvoltage and shortcircuit protection
 Electrical Connection: - DIN EN 175301-803 Form A incl. junction box (old DIN 43650 A)
 - DIN EN 175301-803 Form C incl. junction box (old DIN 43650 C)
 - M12x1 (4-pin IP 67)
 - cable outlet 2 m (IP 67)
 - others on request

Power supply (+ Load):
 4 - 20 mA: 8 ... 30 V_{DC} (R_A[Ω] ≤ (U_B[M]-8V)/0,02 A)
 2 ... 5 V_{DC}: 8 ... 30 V_{DC} (R_A > 5 kΩ)
 0 ... 10 V_{DC}: 14 ... 30 V_{DC} (R_A > 10 kΩ)
 0.5 ... 4.5 V_{ratio}: 8 ... 30 V_{DC} (R_A > 4,5 kΩ)
 Response time: ≤ 4 ms
 Temperature influence: ≤ 2.5 % in range 0... 80 K
 Protection: IP 65 (IP 67) acc. to EN 60529
 Load capacity: 500 g shock (ICE 68-2-27)
 10 g vibration (ICE 68-2-6)
 CE-conformance: 89/336/EWG interface emission and resistance according to EN 61326 A+B
 97/23/EG pressure gauge code Modul H
 Weight: approx. 80 g

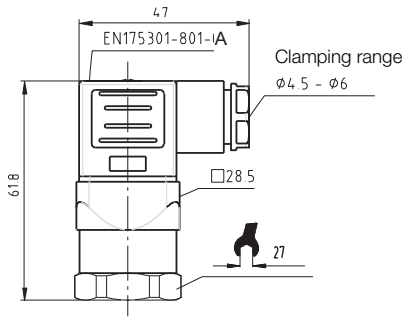
Order details sensor (Example: SEN-3297 B075 B3)

Model	Output	Measuring range	Mechanical Connection	Elektrical Connection	
SEN-3297... Accuracy class 1.0 %	without = 4 - 20 mA, 2-wire (standard) 1 = 0 ... 5 V _{DC} (8 ... 30 V _{DC}) 2 = 0 ... 10 V _{DC} (14 ... 30 V _{DC}) 3 = 0.5 ... 4.5 V _{DC} (8 ... 30 V _{DC})	Piezoresistive B 025 = 0 ... 1 bar B 035 = 0 ... 1.6 bar B 045 = 0 ... 2.5 bar B 055 = 0 ... 4 bar B 065 = 0 ... 6 bar	Thin film B 075 = 0 ... 10 bar B 085 = 0 ... 16 bar B 095 = 0 ... 25 bar B 105 = 0 ... 40 bar B 115 = 0 ... 60 bar B 125 = 0 ... 100 bar B 135 = 0 ... 160 bar B 145 = 0 ... 250 bar B 155 = 0 ... 400 bar B 165 = 0 ... 600 bar	B = G ¼ B, male (standard) A = G ½ B, male C = G ⅜ B, male D = G ½ DIN 3852-E, male E = G ¼ DIN 3852-E, male F = ½ NPT, male G = ¼ NPT, male K = G ¼ NPT, female L = ¼ NPT, female	without = plug Form A (DIN 43650) incl. junction box 1 = plug Form C (DIN 43650) incl. junction box 3 = plug M12x1 (4-pin, IP 67) 5 = 2 m cable, IP 67

Dimensions (in mm)

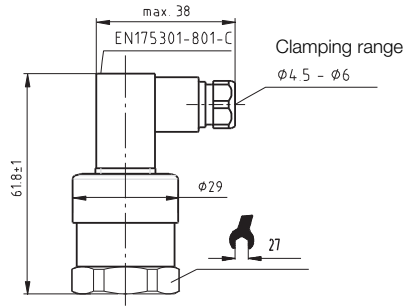
SEN-3297..0

Plug according to DIN
EN 175301-803 Form A



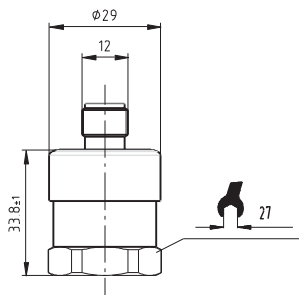
SEN-3297..1

Plug according to DIN
EN 175301-803 Form C



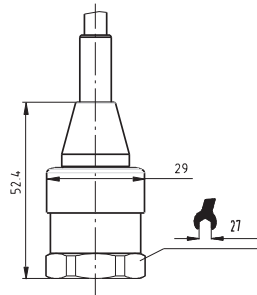
SEN-3297..3

Circular plug-in connector M12x1



SEN-3297..5

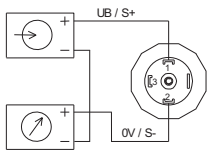
Cable outlet



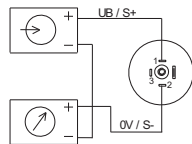
Electrical Connection

2 -wire

SEN-3297..0

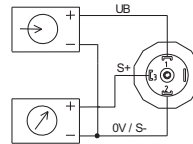


SEN-3297..1

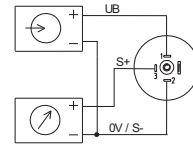


3 -wire

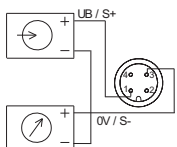
SEN-3297..0



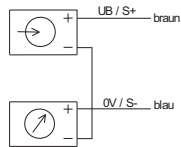
SEN-3297..1



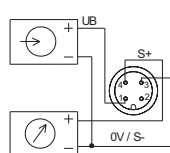
SEN-3297..3



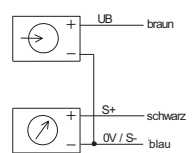
SEN-3297..5



SEN-3297..3



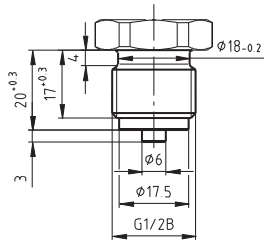
SEN-3297..5



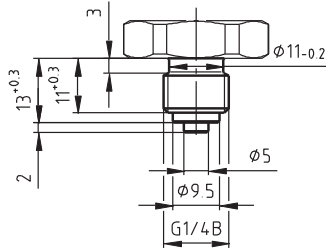
Dimensions

Pressure connections

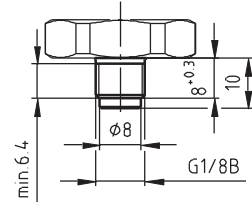
SEN-3297..A..



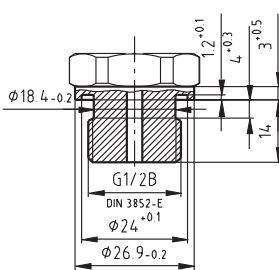
SEN-3297..B..



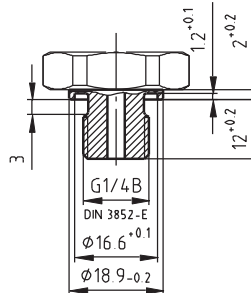
SEN-3297..C..



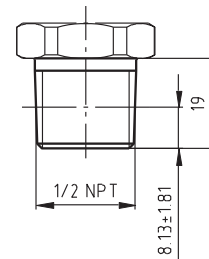
SEN-3297..D..



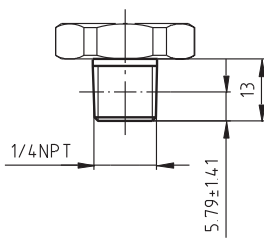
SEN-3297..E..



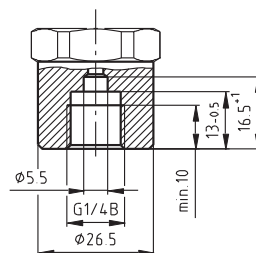
SEN-3297..F..



SEN-3297..G..



SEN-3297..K..



SEN-3297..L..

