

Rotating Vane Flow Indicator for Liquids



measuring
•
monitoring
•
analyzing

DIH



- Range: 0.05...0.13 GPM to 0.26...13.2 GPM (Water)
- Connection: 3/8" or 1" NPT
- Housing: Nickel-Plated Brass, Stainless Steel, or POM
- P_{max} : 230 PSI
- T_{max} : 176 °F
- ΔP at Max. Flow: 14.5 PSI



KOBOLD companies worldwide:

ARGENTINA, AUSTRALIA, AUSTRIA, BELGIUM, BULGARIA, CANADA, CHILE, CHINA, COLOMBIA, CZECH REPUBLIC, EGYPT, FRANCE, GERMANY, HUNGARY, INDIA, INDONESIA, ITALY, MALAYSIA, MEXICO, NETHERLANDS, PERU, POLAND, REPUBLIC OF KOREA, ROMANIA, SINGAPORE, SPAIN, SWITZERLAND, TAIWAN, THAILAND, TUNISIA, TURKEY, UNITED KINGDOM, USA, VIETNAM

KOBOLD Instruments, Inc.
1801 Parkway View Drive
Pittsburgh, PA 15205
☎ Main Office:
1.412.788.2830
☎ 1.412.788.4890
info@koboldusa.com
www.koboldusa.com



Rotating Vane Flow Indicator Model DIH

Key Features

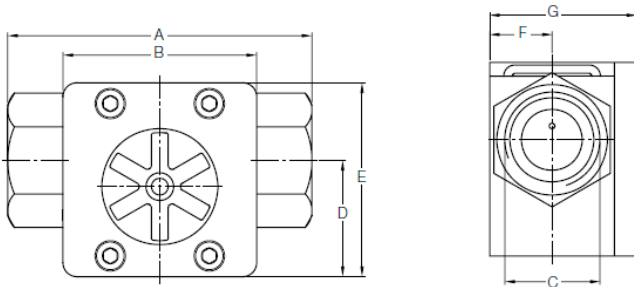
- Range: 0.05...0.13 GPM - 0.26...13.2 GPM Water
- Connection: 3/8" or 1" NPT
- Housing: Nickel-Plated Brass, Stainless Steel, or POM
- P_{max} : 230 PSI
- T_{max} : 176 °F
- ΔP at Max. Flow: 14.5 PSI



Material Combination

	DIH-11...	DIH-12...	DIH-13...
Housing	Nickel plated brass	SS (1.4404)	POM
Cover	PMMA (Plexi)	PMMA (Plexi)	PMMA (Plexi)
Seal	NBR	FKM	NBR
Rotor	Polypropylene	Polypropylene	Polypropylene
Axle	Ceramic	Ceramic	Ceramic
P_{max}	230 PSI	230 PSI	230 PSI
T_{max}	176 °F	176 °F	176 °F

Dimensions



Dimensions	3/8" NPT Conn. Models	1" NPT Conn. Models
A	84 mm	110 mm
B	60 mm	70 mm
C	3/8" NPT	1" NPT
D	40 mm	42 mm
E	60 mm	70 mm
F	19.5 mm	22.5 mm
G	41.5 mm	53 mm

Order Details (Example: DIH-1108G N25)

Range GPM Water	Model Number			Connection
0.05...0.13	DIH-1101G..	DIH-1201G..	DIH-1301G..	..N10 = 3/8" NPT
0.08...0.52	DIH-1102G..	DIH-1202G..	DIH-1302G..	
0.13...1.3	DIH-1103G..	DIH-1203G..	DIH-1303G..	
0.26...3.2	DIH-1104G..	DIH-1204G..	DIH-1304G..	
0.26...4.8	DIH-1105G..	DIH-1205G..	DIH-1305G..	
0.26...5.8	DIH-1106G..	DIH-1206G..	DIH-1306G..	..N25 = 1" NPT
0.26...9.2	DIH-1107G..	DIH-1207G..	DIH-1307G..	
0.26...13.2	DIH-1108G..	DIH-1208G..	DIH-1308G..	