



# Diaphragm-Type Diaphragm Seals

## Extended Flange-Type Diaphragm

### Type L990.29

## Diaphragm Seals

### Application

Process industry diaphragm seal to combine with pressure transmitters and Bourdon tube pressure gauges. Enables flush installation in heavily insulated vessels. Intended for corrosive, contaminated, hot or viscous pressure media.

### Design

Flange with integral extended diaphragm, which requires hydraulic fluid to transmit pressure to instrument.

### Process Connection

2" to 4" per ASME/ANSI B16.5

### Instrument Connection

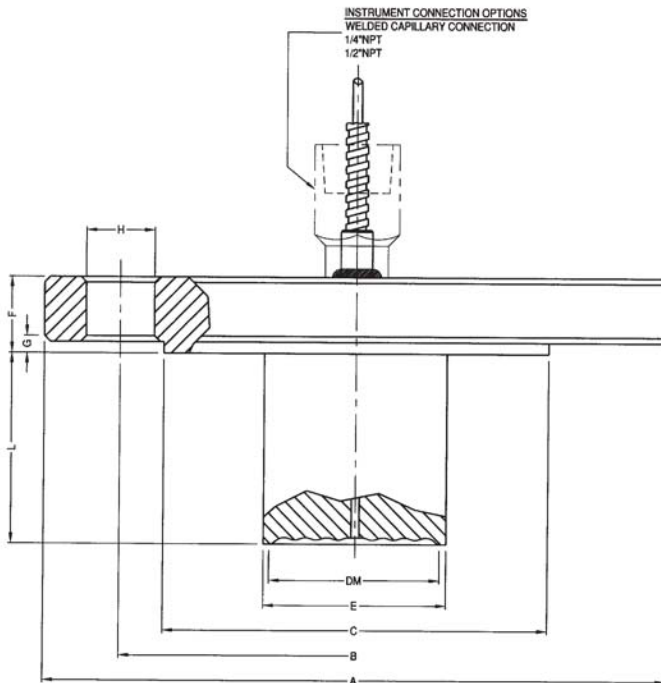
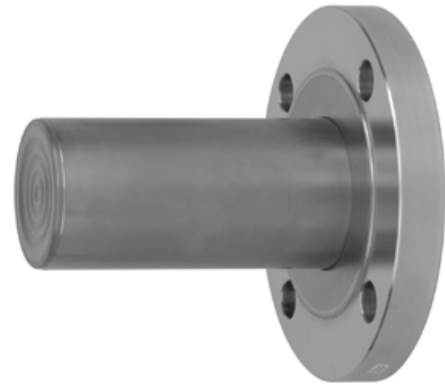
Capillary, 1/4" or 1/2" NPT-female

### Suitable Pressure Ranges

10 inH<sub>2</sub>O to class 1500, depending on flange, diaphragm size and process conditions

### Available Options

See Selection Guide (over)



X=NUMBER OF BOLT HOLES  
DM=EFFECTIVE DIAPHRAGM DIAMETER  
CLASS=FLANGE RATING PER ASME B16.5  
ALL DIMENSIONS IN INCHES UNLESS OTHERWISE NOTED

SIZE	CLASS	A	B	C	DM	E(1)	F	G	H	X	L				
2"	150	6.00	4.75	3.62	1.8	1.90	0.75		0.75	4					
	300	6.50	5.00				0.88		0.75	8					
3"	150	7.50	6.00	5.00	2.8	2.99	0.94		0.75	4					
	300	8.25	6.62				1.12	0.06	0.88	8	2.0	3.0	4.0	6.0	
4"	150	9.00	7.50	6.19	3.5	3.70	0.94		0.75	8					
	300	10.04	7.88				1.25		0.88	8					

(1)BASED ON SCHEDULE 40 DWG.#2211963-5

To determine the effects of temperature and response time in a specific application, contact the factory for an **Application Questionnaire**. The information provided will allow WIKA Technical Support to accurately model your application parameters using state-of-the-art computer simulation techniques.