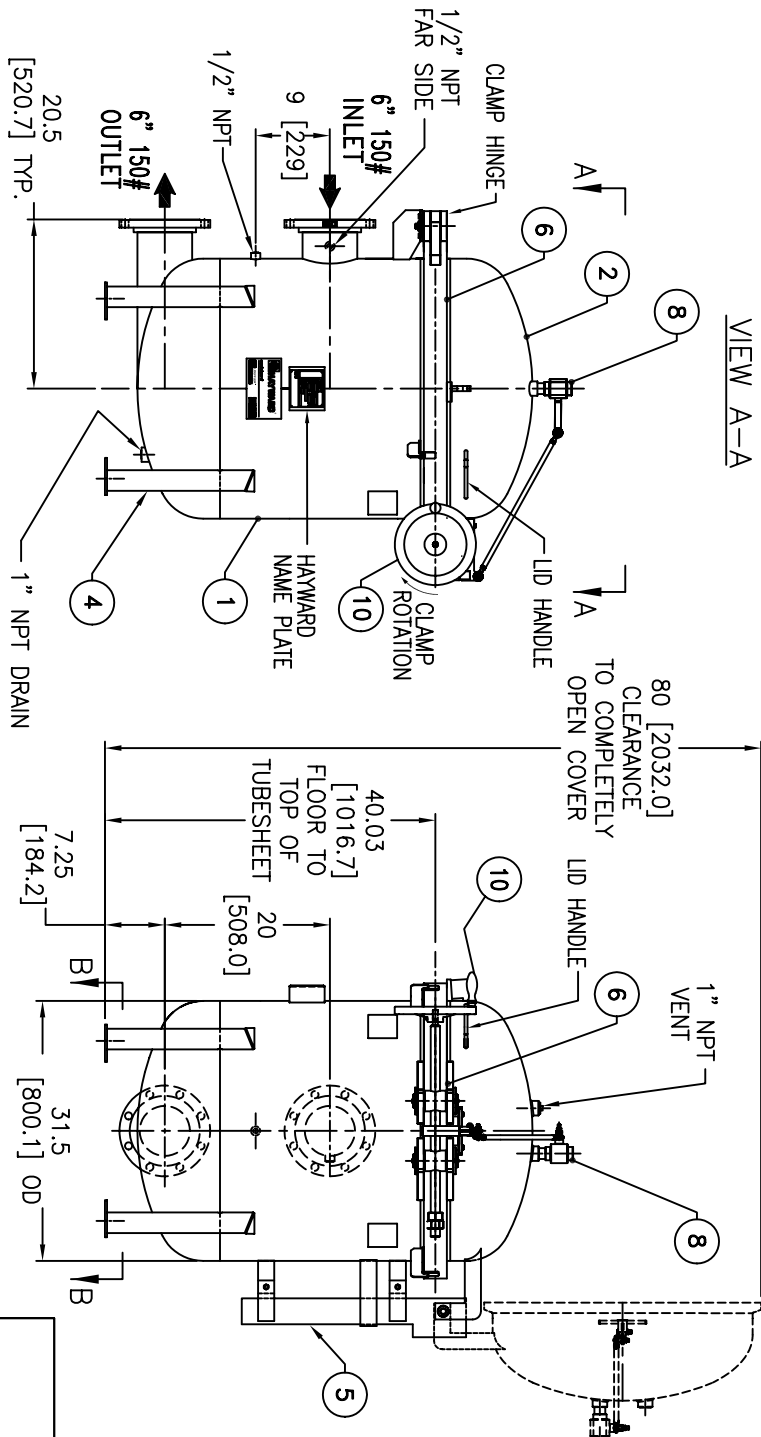


(4) .75 [19.0] Ø BOLT HOLES
LOCATED ON 30.71 [780.0] B.C.D.

| ITEM | PART NAME | MATERIAL |
|------|---------------------------|-------------------------|
| 1 | BODY | SA240-316/316L |
| 2 | COVER | SA240-316/316L |
| 3 | O-RING | BUNA-N |
| 4 | LEGS | STAINLESS STEEL |
| 5 | SPRING ASSISTED MECHANISM | STAINLESS STEEL |
| 6 | CLAMP ASSEMBLY | STAINLESS STEEL |
| 7 | FILTER BAG HOLD DOWN | 316 SS |
| 8 | 1" VENT VALVE ASSY. | 316 SS |
| 9 | SPINDLE BOLT | SA193-87 NEDOX COATED |
| 10 | SPINDLE HANDLE | ALUMINUM (BLACK COATED) |

NOTES:

1. UNITS ARE DESIGNED, FABRICATED & U STAMPED IN ACCORDANCE WITH ASME SECT. VIII, DIV. 1 BOILER & PRESSURE VESSEL CODE, IN COMPLIANCE TO LATEST ADDENDA.
2. INLET/OUTLET FLANGE CONNECTIONS PER ANSI B16.5 (10.3 BAR @ 121.1°C)
3. DESIGN PRESSURE: 150 PSIG @ 250°F
4. ALL DIMENSIONS ARE IN INCHES / [mm]
5. ALL BOLT HOLES STRADDLE NATURAL CENTERLINE.
6. APPROX. WEIGHT (DRY): 920 lbs. (417 kgs.)
7. APPROX. SHIPPING WEIGHT 1050 lbs. (476 kgs.)



ELECTRONIC FILE NAME: SE0606TSL.DWG
REF. ECR D649
DATE 01/04/06

UNAUTHORIZED USE, MANUFACTURE OR REPRODUCTION IN WHOLE OR IN PART IS PROHIBITED. DRAWING, DESIGN AND OTHER DISCLOSURES PROPERTY OF EATON FILTRATION, LLC

| | | | | | | | |
|------------|--|------|----------|-------|----|------|----------|
| | | DATE | 02/13/04 | CERT. | LH | DATE | 02/13/04 |
| | | REV | C | | | | |
| NAME | EATON FILTRATION, LLC 900 FAIRMOUNT AVENUE, ELIZABETH, NEW JERSEY 07207 6" MBF-0602 FILTER VESSEL 6"-150# INLET/TANGENTIAL OUTLET SPINDLE TYPE-SE (SSTL) | | | | | | |
| P.O. NO.: | CERTIFIED FOR: | | | | | | |
| REG. NO.: | VESSEL CODE: V-MBF-0602-AB10-060A-UT-11SE-100P | | | | | | |
| QUOTE NO.: | PART NUMBER: F3AV0600200L | | | | | | |
| TAG NO.: | | | | | | | |

DRAWN FJM
DATE 02/13/04
DATE 02/13/04
SIZE A
DWG NO.
REV C

SE0606TSL