

Obstruction light low intensity Series TEF 2440

TRANBERG®

STAHL



- > Rugged construction
- > Complies with:
ICAO Annex 14 Vol. 1 Ch.
6 Low Intensity Type B
- > Low maintenance
- > Low power consumption
- > Resistant to vibrations
- > Long lifetime expectancy
- > Integrated drain plug



16776E00

E5

www.stahl.de



	ATEX					
Zone	0	1	2	20	21	22
For use in			x			

Applications

- Aircraft obstruction light
- Cranes
- Marker / warning light

Selection Table

Version	Rated voltage	Colour of glass	Order number	Art. no.	Weight kg
Red obstruction light Series TEF 2440 LED	230 V AC	red	TEF2440160	170636	
	120 V AC	red	TEF2440161	170637	
	24 V AC / DC	red	TEF2440162	170638	

WebCode T2440B

Obstruction light low intensity

Series TEF 2440



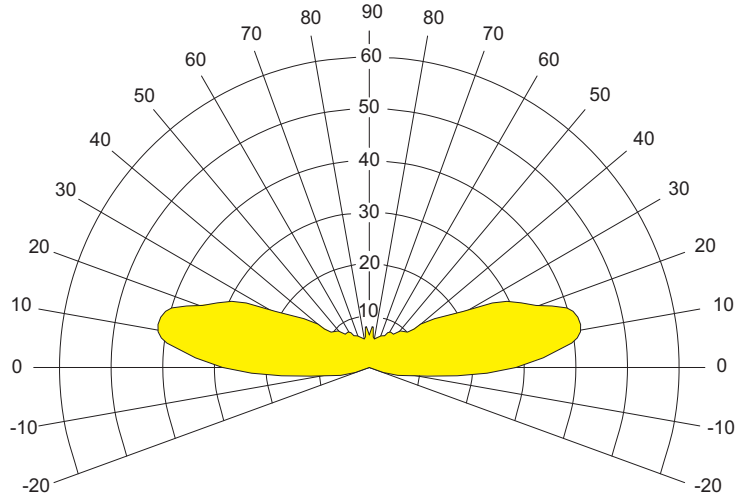
Technical Data

Electrical data

Rated voltage	24 V AC / DC, 120 V AC, 230 V AC
Power consumption	max. 10 W

Luminous characteristics

Light intensity	32 cd.
Luminous intensity distribution	



08472E00

Ambient conditions

Ambient temperature	-30 ... +45 °C
---------------------	----------------

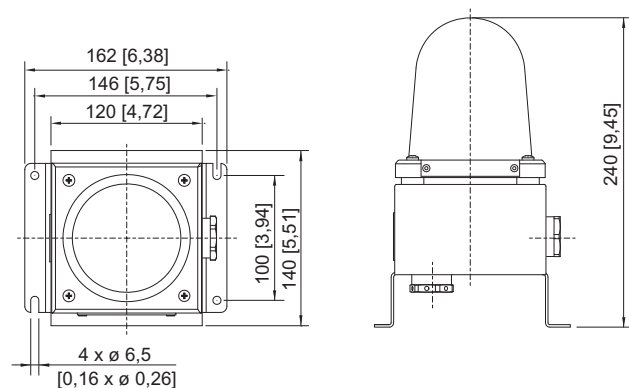
Mechanical data

Degree of protection	IP66
Service life	light source: min. 50,000 working hours
Material	
Enclosure	acid proof stainless steel, powder coated (RAL 9002)
Globe	polycarbonate
Colour of glass	red
Cable entries	2 x M 25, delivered with 2 x cable glands M 25

Accessories and Spare Parts

Designation	Description	Order number	Art. no.	Weight kg
Globe	Red globe with LED's, without gasket	TEF4417	170639	0,750
LED driver	LED driver 230 V AC	TEF50860079	165834	1.300
	LED driver 120 V AC	TEF50860089	165835	1.300
	LED driver 24 V AC / DC	TEF4399	165831	0.150
Cable gland	cable gland, M25	TEF9147200	165825	0.970
	stopping plug EEx e, M25	TEF7947304	165845	0.600

Dimensional Drawings (All Dimensions in mm [inches]) - Subject to Alterations



06431E00

We reserve the right to make alterations to the technical data, dimensions, weights, designs and products available without notice. The illustrations cannot be considered binding.