

# Piloted Non-Return Valves

Piloted non-return valves are designed to **protect installations**: if the compressed air supply is removed, they lock the air supply to the cylinder, thus maintaining it in position.

## Product Advantages

- System Protection** | Protection of your system  
Control of inlet and outlet flow: cylinder operation optimised  
Vent saves time on restart after maintenance operations (model 7894)
- 3 Functions in 1 Product** | A multi-purpose fitting:
  - piloted non-return valve
  - flow control regulator
  - manual exhaust
 All-in-one product: integrated fittings for the control and supply
- Flexible Operation** | Orientable and adjustable through 3 axes  
Can be integrated into any installation configuration  
Push-in connection for quicker and more reliable installation  
Mounted in pairs directly on the cylinder



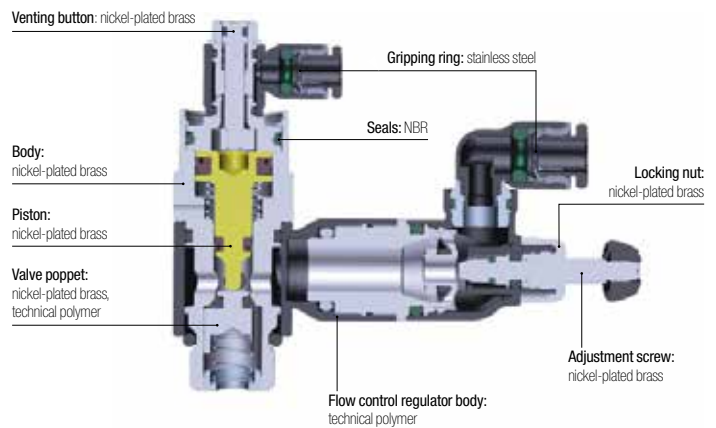
Applications

- Pneumatics
- Assembly
- Robotics
- Machine Tools
- Packaging
- Handling
- Automotive Process

## Technical Characteristics

<b>Compatible Fluids</b>	Compressed air
<b>Working Pressure</b>	1 to 10 bar
<b>Working Temperature</b>	-5°C to +60°C
<b>Cracking Pressure</b>	0.3 bar

### Component Materials



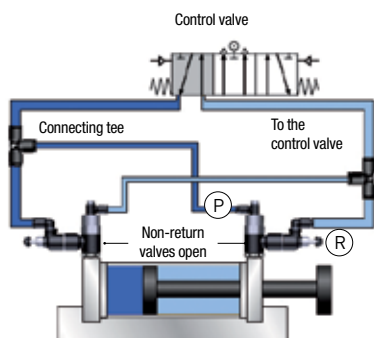
Silicone-free

### Regulations

DI: 2002/95/EC (RoHS)  
RG: 1907/2006 (REACH)  
DI: 97/23/EC (PED)

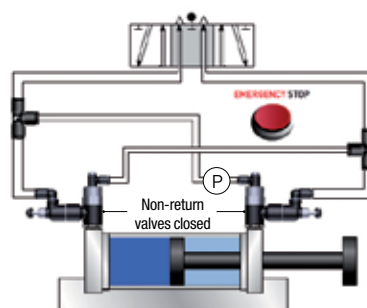
## Operation

### Normal Operation



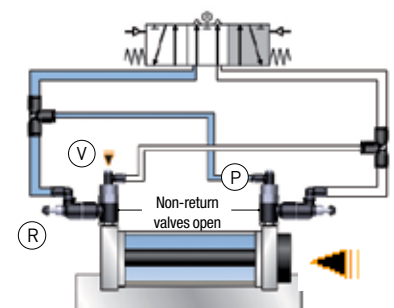
Pilot signal (P)  
Regulation of cylinder rod speed (R)

### Emergency Stop or Pressure Drop



Drop/removal of pilot pressure (P) = cylinder rod locked

### Venting Operation



Venting (V) returns the cylinder rod to the start position, employing the pressure chamber through the flow regulator (R) and pilot line (P)