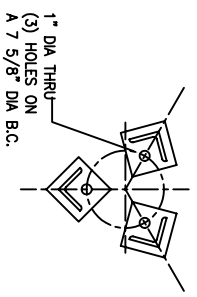
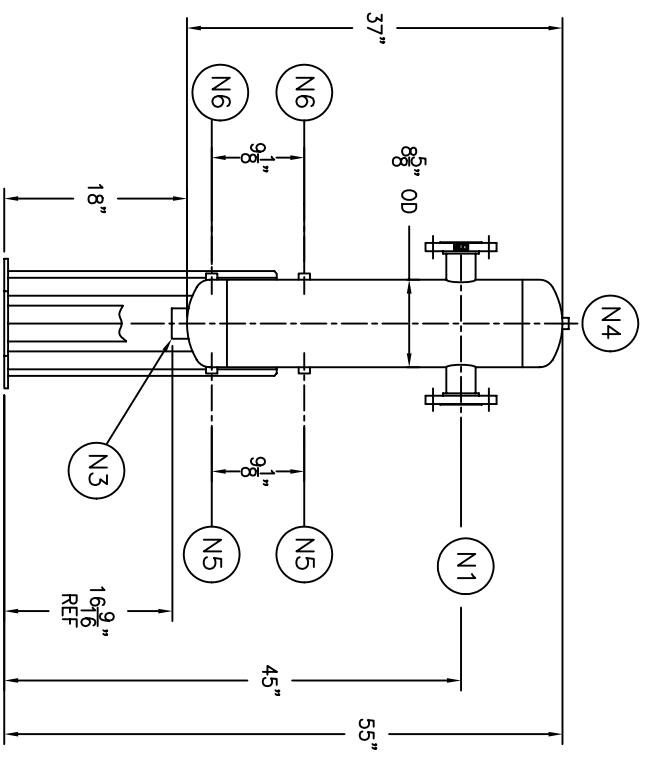
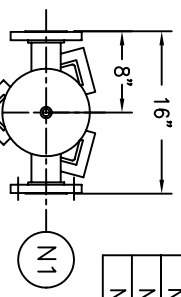


NOZZLE SCHEDULE		
ITEM	QTY.	NAME DESCRIPTION
N1	1	INLET 2 1/2"-150# RFSO ASME B16.5
N2	1	OUTLET 2 1/2"-150# RFSO ASME B16.5
N3	1	DRAIN 2" NPT 3000# HALF COUPLING
N4	1	VENT 1/2" NPT 3000# HALF COUPLING
N5	2	W.G. 1/2" NPT 3000# HALF COUPLING
N6	2	LIQUID LEVEL 1/2" NPT 3000# HALF COUPLING



DETAIL OF LEGS

REV	DATE	CHANGE	ECR	BY	APP
A	7/19/01	NEW ISSUE	9641	GC	VH
B	11/1/05	REVISED TITLE BLOCK	D507	FM	LH

NOTES:

- UNITS ARE TO BE DESIGNED, FABRICATED & "U" OR "UM" STAMPED (IF REQ'D) IN ACCORDANCE WITH ASME B & PV CODE, SECTION VIII, DIVISION 1, IN COMPLIANCE TO CURRENT PUBLISHED ADDENDA.
- ALL DIMENSIONS ARE IN INCHES.
- ALL BOLT HOLES ARE TO STRADDLE NATURAL CENTERLINES.
- SHIPPING WEIGHT: 195 POUNDS.
- DESIGN DATA:
 DESIGN PRESSURE- 150 PSIG
 DESIGN TEMPERATURE- 450° F
 MIN. DESIGN METAL TEMP.- -20° F @ 150 PSIG
 HYDROTEST PRESSURE- 195 PSIG
 CORROSION ALLOWANCE- 0 INCHES
- MATERIAL: CARBON STEEL.

STANDARD

CUSTOMER:
 REG. NO.:
 P.O. NO.:
 TAG NO.:
 PART NO.: 2.5TS150C-L, 2.5TS150C-LU,
 2.5TS150C-LM

EATON
 900 FAIRMOUNT AVENUE, ELIZABETH, NEW JERSEY 07207
EATON FILTRATION, LLC
 NAME 2.5" TYPE "TS" GAS/LIQUID SEP.
 150#RF FLG CSTL

ELECTRONIC FILE NAME:
 25TS150CL.DWG
 TOLERANCES UNLESS OTHERWISE SPECIFIED
 PER ENGINEERING STANDARD ES- ---
 UNAUTHORIZED USE, MANUFACTURE OR
 REPRODUCTION IN WHOLE OR IN PART IS
 PROHIBITED. DRAWING, DESIGN AND
 OTHER DISCLOSURES PROPERTY OF
 EATON FILTRATION, LLC

DRAWN	GC	DATE	7/19/01	CHECKED	FJM	DATE	7/19/01
APP	VH	DATE	7/19/01	SCALE	NTS	ECR	9641
SIZE	A	DWG NO	SD2.5TS150CL	REV	B		