

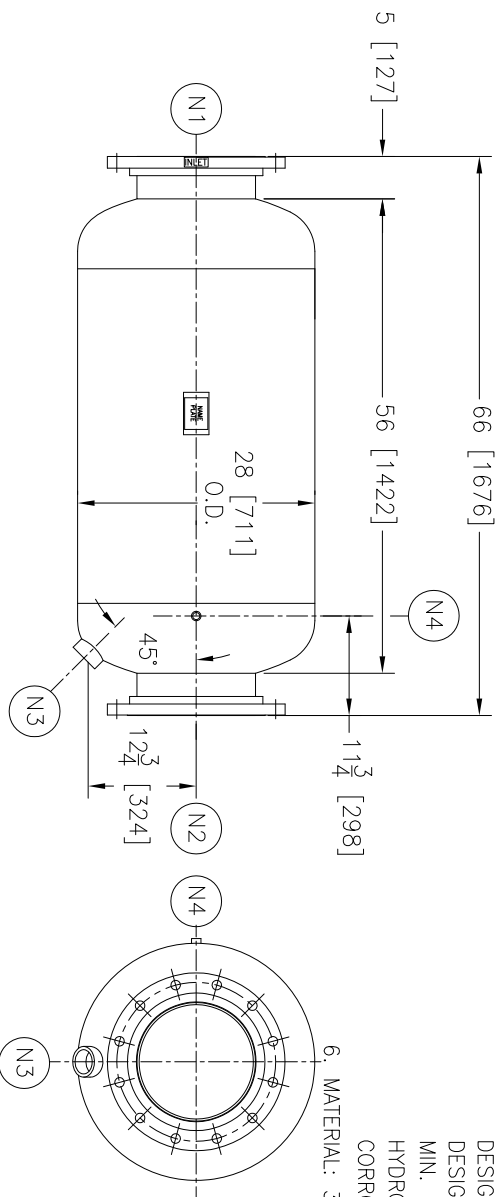
NOZZLE SCHEDULE		
ITEM	NAME	DESCRIPTION
N1	INLET	14"-150# RF50 ASME B16.5
N2	OUTLET	14"-150# RF50 ASME B16.5
N3	DRAIN	2 1/2" NPT 3000# COUPLING
N4	VENT	1/2" NPT 3000# COUPLING

REV	DATE	CHANGE	ECR	BY	APP
A	09/25/07	NEW ISSUE	E835	GO	LH
B	02/18/14	UPDATE HYDROTEST PRESS. TITLE BLOCK	0094842	JJ	FM

NOTES:

- UNITS ARE TO BE DESIGNED, FABRICATED & "U" STAMPED (IF REQ'D.) IN ACCORDANCE WITH ASME B & PV CODE, SECTION VIII, DIVISION 1 IN COMPLIANCE TO CURRENT PUBLISHED ADDENDA.
- ALL DIMENSIONS ARE IN INCHES. [MM].
- ALL BOLT HOLES ARE TO STRADDLE NATURAL CENTERLINES.
- SHIPPING WEIGHT: 1000 POUNDS.
- DESIGN DATA:

DESIGN PRESSURE- 150 PSIG
 DESIGN TEMPERATURE- 300° F
 MIN. DESIGN METAL TEMP.- -20° F @ 150 PSIG
 HYDROTEST PRESSURE- 207 PSIG ∇ B
 CORROSION ALLOWANCE- 0 INCHES
 6. MATERIAL: 304/304L S. STEEL.



CUSTOMER:
 REG. NO.:
 P.O. NO.:
 TAG NO.:
 PART NO.: 1431L150S/M/U



EATON FILTRATION, LLC
 44 APPLE ST. TINTON FALLS, NEW JERSEY 07724 U.S.A.
 NAME 14" TYPE "31-L" GAS/LIQUID
 SEPARATOR 150#RF SSTL

DRAWN	GO	DATE	CHECKED	FM	DATE
APP	LH	09/26/07	SCALE	NTS	ECR E835

ELECTRONIC FILE NAME:
 SD1431L150S.DWG
 TOLERANCES UNLESS OTHERWISE SPECIFIED
 PER ENGINEERING STANDARD ES--
 UNAUTHORIZED USE, MANUFACTURE OR
 REPRODUCTION IN WHOLE OR IN PART IS
 PROHIBITED. DRAWING, DESIGN AND
 OTHER DISCLOSURES PROPERTY OF
 EATON FILTRATION, LLC

SIZE	DWG	NO	REV
A	SD1431L150S	B	