



Butterfly Isolating Valves with Electric Actuator



measuring
•
monitoring
•
analysing

KLE



- p_{\max} : PN16; t_{\max} : +160°C
- Flanges DN 40... DN 80
- 24 V_{DC}, 230 V_{AC}
- Housing:
GGG-40, aluminium
- Butterfly disc:
stainless steel, steel
- Seals:
EPDM, FKM



KOBOLD companies worldwide:

ARGENTINA, AUSTRIA, BELGIUM, BULGARIA, CANADA, CHILE, CHINA, COLOMBIA, CZECHIA, DOMINICAN REPUBLIC, EGYPT, FRANCE, GERMANY, GREAT BRITAIN, HUNGARY, INDIA, INDONESIA, ITALY, MALAYSIA, MEXICO, NETHERLANDS, PERU, POLAND, ROMANIA, SINGAPORE, SOUTH KOREA, SPAIN, SWITZERLAND, TAIWAN, THAILAND, TUNISIA, TURKEY, USA, VIETNAM

KOBOLD Messring GmbH
Nordring 22-24
D-65719 Hofheim/Ts.
Head Office:
+49(0)6192 299-0
+49(0)6192 23398
info.de@kobold.com
www.kobold.com



Butterfly Isolating Valve with Electric Actuator, Metal Housing Model KLE-TA

Design

One-piece construction. For mounting between two flanges.

Operation: directly controlled by an electric motor, with gear reduction unit between motor and valve assembly

Voltage rating: 230 V_{AC} 50 Hz ±10% or 24 V_{DC}

Mounting position: any preferably with electric motor in upright position

Protection type: IP 65 (according to DIN 40 050)

Cable connection: PG 11

Standard equipment: two additional limit switches, optical position indicator, emergency manual operation

Technical Details

Valve

Connections: flanges DN 40... DN 80
overall length acc. to DIN 3202KI

Temperature range: EPDM: -35°C... +120°C
FKM: -20°C... +160°C

Operating pressure

- between 2 flanges: max. 16 bar (GGG housing)
max. 10 bar (aluminium housing)
- end valve: max. 6 bar

Materials

Housing: spheroidal graphite cast iron GGG-40, aluminum alloy
1.4408, Stahl C22 (nur KLE-TAH)

Disc: 1.4408, Stahl C22 (nur KLE-TAH)

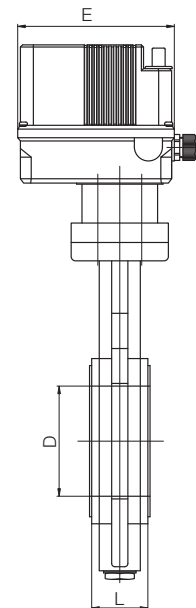
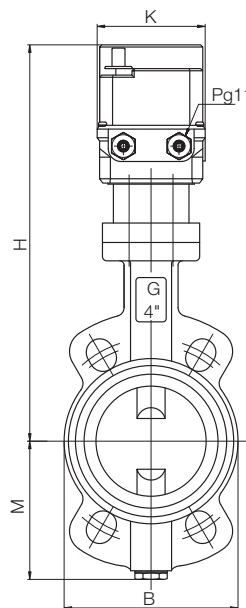
Shaft seal: NBR

Shaft: stainless steel 1.4016, 1.4571

Bushing: bronze

Sleeve: EPDM, FKM

KLE-TA



Dimensions

Flange [DN]	H [mm]	B [mm]	L [mm]	H [mm]	M [mm]	K [mm]	E [mm]	Operating time [s/90°]	Power consumption [VA]	Weight [kg]
40	49	84	33	318	75	100	145	15	15	4.4
50	55	102	43	326	81	100	145	15	15	5.3
65	68	116	46	336	89	124	169	15	15	7.0
80	81	133	46	346	110	124	169	15	15	7.5

Order Details (Example: KLE-TA 7 E F40 0)

Order no.	Housing	Seal	Connection size	Voltage
KLE-TA	7 = Aluminium H = GGG-40	E = EPDM F = FKM	F40 = DN 40 F50 = DN 50 F65 = DN 65 F80 = DN 80	0 = 230 V _{AC} 3 = 24 V _{DC}