

Emergency Luminaire for Fluorescent Lamps Series EXLUX 6409



www.stahl.de



16126E00

- > As wall, ceiling and pendant light fitting or pole mounted light fitting
- > Version with 2 lamps: 18 W and 36 W
- > Central locking
- > Disconnecting the battery circuit when opening the luminaire or the battery box
- > Weekly functional test
- > Light duration test of the emergency lighting once a year



E2

The lights of the Series **EXLUX 6409** can be used as emergency lighting

Zone	ATEX / IECEx					
	0	1	2	20	21	22
For use in:			x		x	x

Explosion Protection	
Global (IECEx)	
Gas and dust	IECEx PTB 14.0043 Ex nA d mb IIC T4 Gc Ex tb IIIC T80 °C Db Ex tc IIIC T80 °C Dc
Europe (ATEX)	
Dust	PTB 14 ATEX 2021 ⊕ II 2 D Ex tb IIIC T80° C Db
Gas and dust	PTB 14 ATEX 2022 ⊕ II 3 G Ex nA d mb IIC T4 Gc ⊕ II 3 D Ex tc IIIC T80 °C Dc
Certifications and certificates	
Certificates	IECEx, ATEX

WebCode 6409A

Emergency Luminaire for Fluorescent Lamps

Series EXLUX 6409

Selection Table

Version	Lamps	Through wiring	Terminal capacity	Cable glands	Order number	Art. no.	Weight kg
Emergency luminaire Series EXLUX 6409	2x 18 W	without	≤ 4 mm ²	Plastic M25	6409/522-9007-1611-7	240868	7.200
				Metal M20	6409/522-9007-1622-7	240870	7.300
			≤ 6 mm ²	Plastic M25	6409/522-9007-2611-7	240871	7.200
				Metal M20	6409/522-9007-2622-7	240872	7.300
		with	≤ 4 mm ²	Plastic M25	6409/522-9607-1611-7	240873	7.300
				Metal M20	6409/522-9607-1622-7	240874	7.400
			≤ 6 mm ²	Plastic M25	6409/522-9607-2611-7	240876	7.300
				Metal M20	6409/522-9607-2622-7	240877	7.400
	2x 36 W	without	≤ 4 mm ²	Plastic M25	6409/542-9007-1611-7	240878	9.500
				Metal M20	6409/542-9007-1622-7	240879	9.600
			≤ 6 mm ²	Plastic M25	6409/542-9007-2611-7	240880	9.500
				Metal M20	6409/542-9007-2622-7	240893	9.600
		with	≤ 4 mm ²	Plastic M25	6409/542-9607-1611-7	240894	9.700
				Metal M20	6409/542-9607-1622-7	240895	9.800
			≤ 6 mm ²	Plastic M25	6409/542-9607-2611-7	240896	9.700
				Metal M20	6409/542-9607-2622-7	240897	9.800

Order Number Supplement

ECG	220 ... 240 V	6.09/.....7-.....
	110 ... 127 V	6.09/.....6-.....
Emergency duration test	with	6.09/.....-.....-7
	without	6.09/.....-.....-8

Note

The lights are delivered without fluorescent lamps and assembly parts. These parts must be ordered separately!

Technical Data

Electrical data	
Rated voltage	Standard: • 220 ... 240 V ± 10%, 50 / 60 Hz (Lamps acc. IEC60081) Optional: • 110 ... 127 V ± 10%, 50 / 60 Hz (Lamps acc. IEC60081) • 120V ± 10%, 50 / 60 Hz (Lamps acc. ANSI IEC C78.81))
Rated insulation voltage	320 V
Disconnection of the light	When opening the light Switch with safety lock; when opening the central lock, all poles of the voltage supply to the ballast are disconnected; contacts of the switching element are NC contacts, they can only switched on again when the lamp cover and the central locking system are closed. In case of a lamp fault , the electronic ballast disconnects the defective lamp from the power supply.
Luminous characteristics	
Lamps	2x 18 W; 2x 36 W (acc. to IEC60081) 2x 17W; 2x 32W (acc. to ANSI IEC C78.81)
Ambient conditions	
Ambient temperature	-20 ... +50 °C -20 ... +50 °C with Breathing Glands 8162 -5 ... +40 °C operationable

Emergency Luminaire for Fluorescent Lamps

Series EXLUX 6409



Technical Data

Mechanical data			
Degree of protection	IP66 / IP67 (IP64 when using the breather 8162) IEC 60598		
Protection class	I (with internal PE connection)		
Material			
Enclosure	Polyester resin, glass fibre-reinforced		
Enclosure colour	colour grey, similar to RAL 7035		
Lamp cover	Polycarbonate		
Gasket	Silicone foam gasket in the lamp cover		
Lamp locking	Central locking which can be opened/closed using a socket key M8 / wrench size 13, hinged lamp cover		
Mounting / Installation			
Cable glands	Standard luminaire Plastic: 2 x M25 x 1.5 cable gland 8161 and 2 x M25 x 1.5 stopping plugs 8290 (enclosed) Metal: 2 x metal plates M20 x 1.5 connected by means of PE for metal cable entries Attention: cable entries must be ordered separately Special: max. 4 bores for M20, M25, NPSM ½" / max. 2 bores for NPT ¾" Metal cable glands: M20 x 1.5, M25 x 1.5; earthing of the metal cable entries by means of metal plates		
Connection	Standard: Spring clamp terminals 6-pole: L1, L2, L3, L', N, PE Clamping range: 1 x 0.75 ... 4 mm ² (solid / finely stranded) (2 free clamping units per pole available) Special: Terminal block with covering 6-pole: L1, L2, L3, L', N, PE Clamping range: 2 x 1.5 ... 6 mm ² (solid); 2 x 1.5 ... 4 mm ² (finely and extra finely stranded)		
Through wiring	Standard light fitting with Light fittings are equipped with internal through wiring. Ingoing and outgoing leads can be connected to the opposite sides. Terminals: see techn. data Wiring cross section: 2.5 mm ² for max. 16 A. Optional without On the connection side, there are 2 bores M25 x 1.5 for cable entries for ingoing and outgoing wiring of the connection line (ingoing and outgoing leads on one side).		
Assembly	For outdoor mounting, a breather is recommended Standard luminaire Standard: 2 x M8 insert nuts in the enclosure Special: Mounting grooves in the enclosure for the use of fastening and ceiling rails for variable luminaire mounting (variable mounting distances for luminaires 17 W; 18 W: 320 ... 480 mm; 32 W; 36 W: 670 ... 930 mm)		
Emergency light electronics			
Emergency light mode	In the emergency light mode, only one lamp is used, which results in reduced light output		
Emergency light service time	Battery capacity	Emergency light service time	Emergency lighting power
	7 Ah	1.5 h 3.0 h	17 W; 18 W 32 W; 36 W 100 % 60 % 60 % 30 %
Switchover voltage	from mains to battery operation for $U < 0.74 \times U_N$ from battery to mains operation for $U > 0.80 \times U_N$		

E2

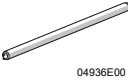
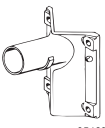
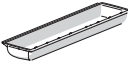
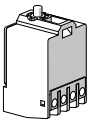
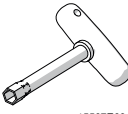
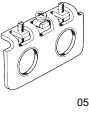
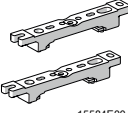
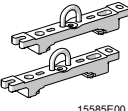
Emergency Luminaire for Fluorescent Lamps

Series EXLUX 6409

Technical Data

Battery set	
Version	Gas-tight NiCd battery
Operating voltage	6 V
Capacity	7 Ah
Replacing the battery set	When opening the battery enclosure, the connection between the battery set and the emergency light electronics is disconnected. The battery set can be replaced after disconnecting the plug-in contacts.

Accessories and Spare Parts

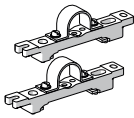


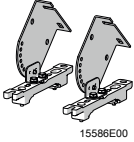

Designation	Figure	Description	Art. no.	Weight kg	
Fluorescent lamps		18 W 1350 lm	108952	0.100	
		36 W 3350 lm	108951	0.200	
		Two-pin cap \varnothing 26 mm Light colour: universal white Pins made of brass			
Bracket for wall mounting with tube		for side entry lamp; with tube, length 400 mm, \varnothing 42 mm	108947	2.480	
Lamp cover		for luminaire L=700	222427	0.639	
		for luminaire L=1310	222428	1.149	
		for luminaire L=700 (resistant to aromatic substances)	256534	0.639	
		for luminaire L=1310 (resistant to aromatic substances)	256535	1.149	
Switch		Switching element 8080/1-3-L, 2 normally closed contacts	132527	0.025	
Socket key		M8 / wrench size 13; to open/close the central locking	222430	0.210	
Adapter plates		1 x M20 x 1.5	1 piece	115815	0.070
		1 x M25 x 1.5	1 piece	115818	0.070
		2 x M20 x 1.5	1 piece	115826	0.060
		2 x M25 x 1.5	1 piece	115828	0.060
		for use together with metal cable glands; the metal cable glands are integrated in the earthing system via adapter plates			
Mounting rail		for a variable mounting distance	1 pair	222826	0.300
Mounting bracket		mounting clamp mounted on a mounting rail for a variable mounting distance	1 pair	222456	0.400

Emergency Luminaire for Fluorescent Lamps

Series EXLUX 6409

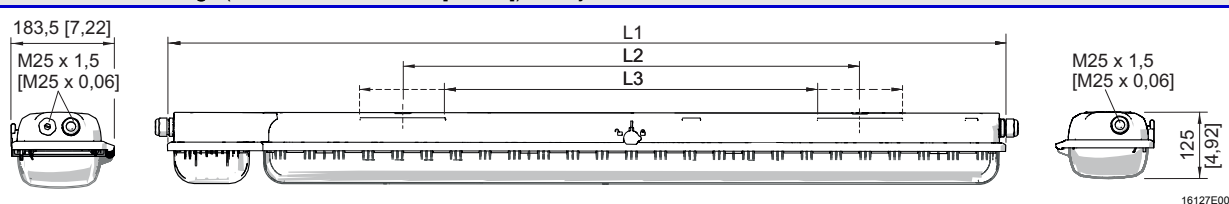


Accessories and Spare Parts

Designation	Figure	Description	Art. no.	Weight kg	
Pipe clamp	 15583E00	R 1 1/2"	222459	1.200	
		R 1 1/4"	222458	1.250	
		R 2"	222460	1.300	
		with mounting rail for a variable mounting distance; Material: stainless steel	1 pair		
Ring bolt	 05378E00	M8, direct mounting in insert nuts	1 pair	115736	0.120
Breathing gland	 05703E00	M25 x 1.5 in order to avoid condensate formation	115738	0.020	
Ceiling and wall-mounting bracket	 15586E00	mounted on a mounting rail for a variable mounting distance; Material: stainless steel Lamp can be swiveled in steps of 15°	1 pair	222827	2.400
Battery set for 6409	 16332E00	Battery cover with built-in battery. Gas-tight NiCd battery; 7 Ah / 6 V	223532	1.195	

E2

Dimensional Drawings (All Dimensions in mm [inches]) - Subject to Alterations



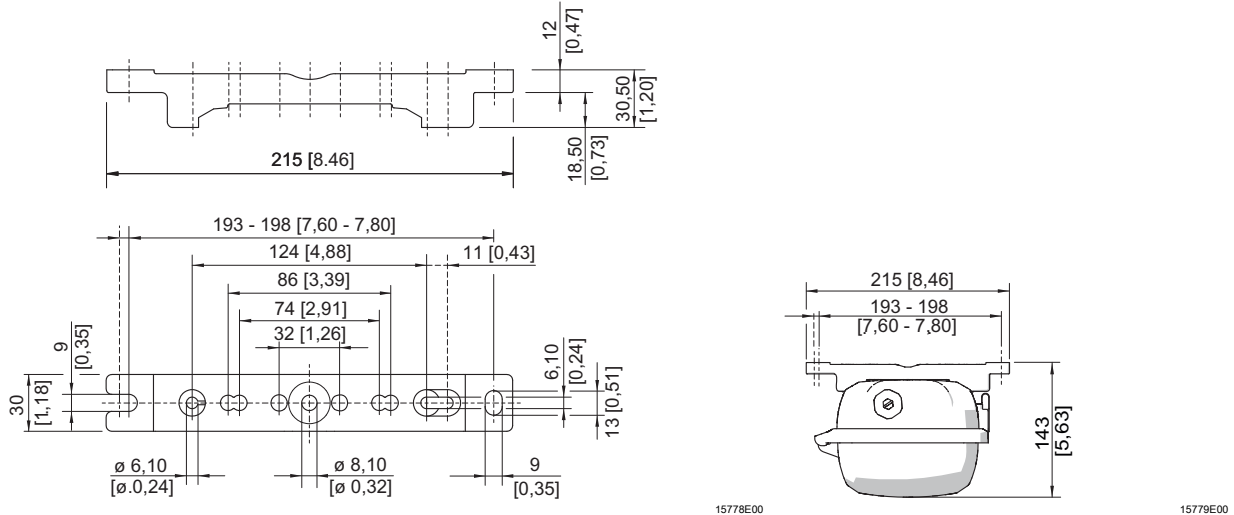
Dimensions	Luminaire	
	17/18 W	32/36 W
L1	857 [33.74]	1467 [57.76]
L2 ¹⁾	400 [15.75]	800 [31.50]
L3 ²⁾	320 ... 480 [12.60 ... 18.90]	670 ... 930 [26.38 ... 36.61]

¹⁾ fixed mounting distance
²⁾ variable mounting distance

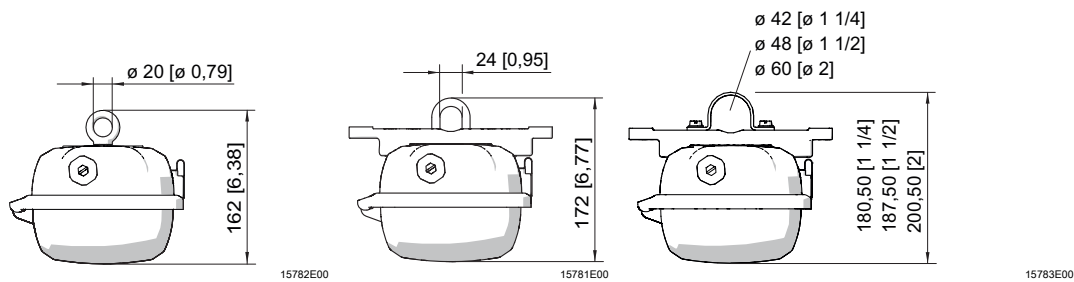
EXLUX 6409

Emergency Luminaire for Fluorescent Lamps Series EXLUX 6409

Dimensional Drawings for Assembly Parts and Accessories (All Dimensions in mm [inches]) - Subject to Alterations



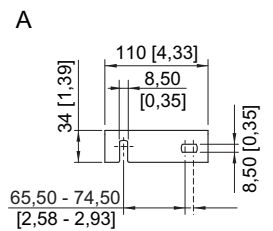
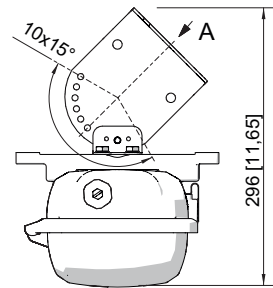
Mounting rail



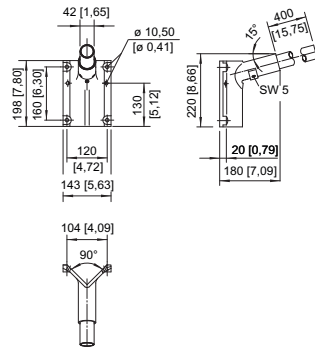
Ring bolt fitted in insert nut of the luminaire

Mounting bracket fitted in mounting rail

Pipe clamp fitted in mounting rail



Wall mounting bracket fitted in mounting rail



Bracket for wall mounting with pipe section

We reserve the right to make alterations to the technical data, dimensions, weights, designs and products available without notice. The illustrations cannot be considered binding.